



**Systemic transformation for  
biodiversity: What intervention, in  
which system and for what purpose?**

Julia Leventon, Simon Vano, Blanka Louckova,  
Patricia Ofori-Amanfo

# Outline

- **Challenge:** Scaling change for transformation
- **Conceptual approach:** Leverage Points in nested systems
- **Application:** Working with cases in PLANET4B



PLANET4B

BETTER DECISIONS FOR BIODIVERSITY AND PEOPLE



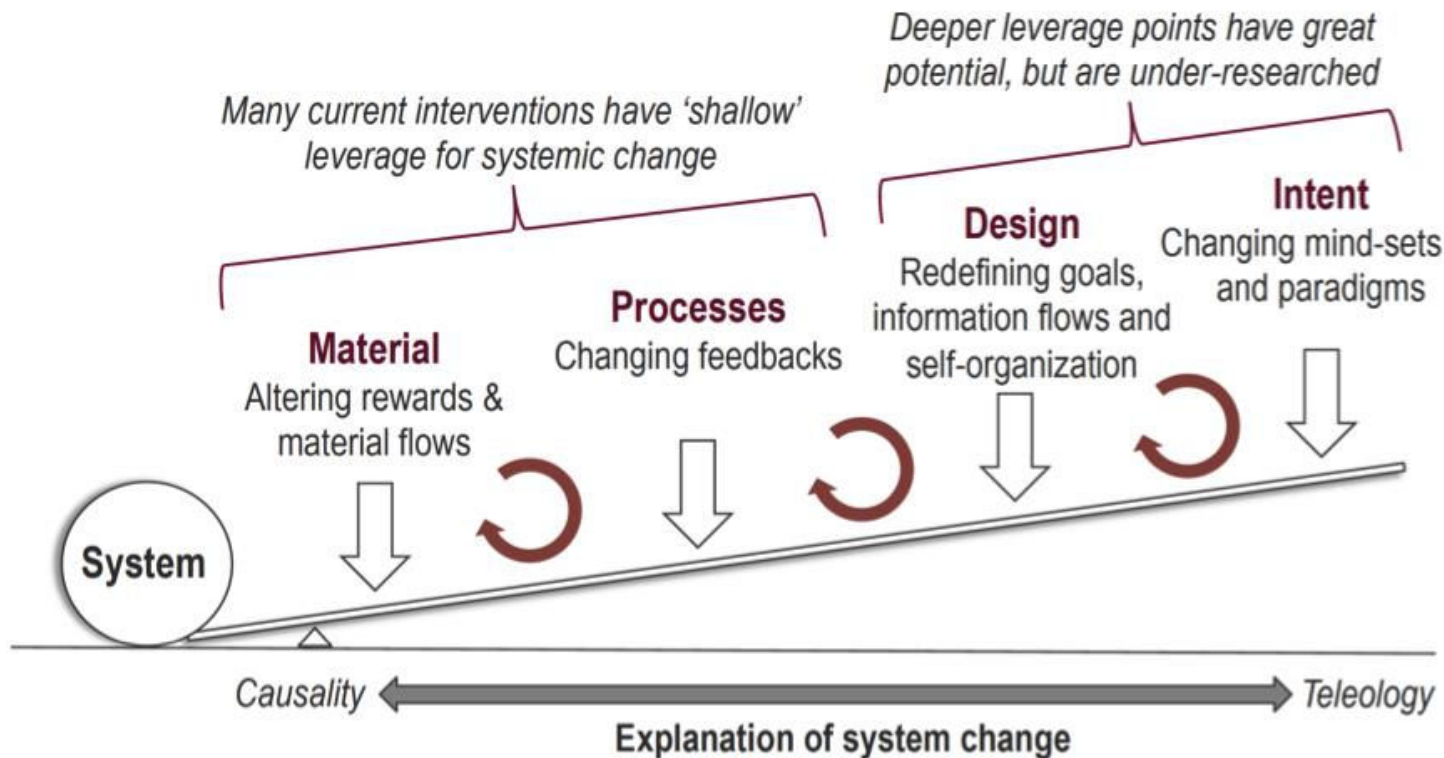


# Challenge:

## Scaling behavior change for transformation

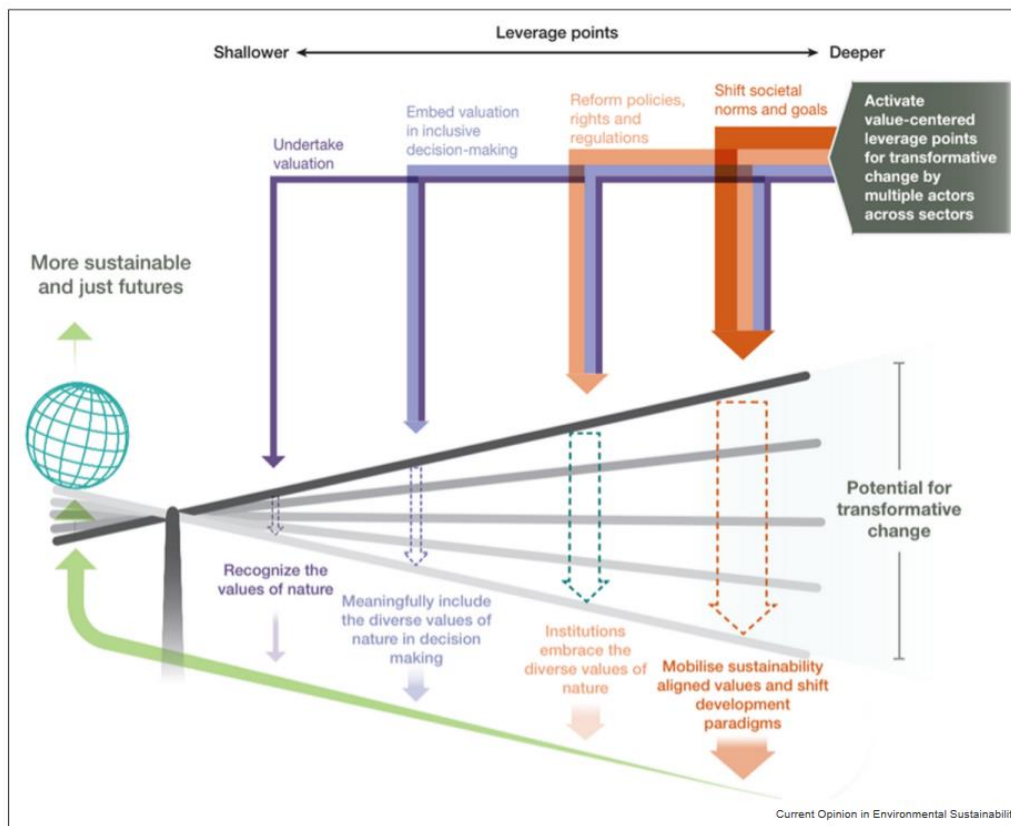
- Increasing recognition on the need for transformative change towards sustainability (e.g., sectoral, societal)
- How **people's behaviour changes** link to broader sustainability transformations?
- Individuals are **shaped by the political economy and society** they are embedded within
- Need to **understand mechanisms of change**
  - Shallow vs deep scaling (e.g. Newell et al., 2021)

# Conceptual approach: Leverage Points



Adapted from D.J. Abson

# Conceptual approach: Leverage Points



Pascual et al., 2023

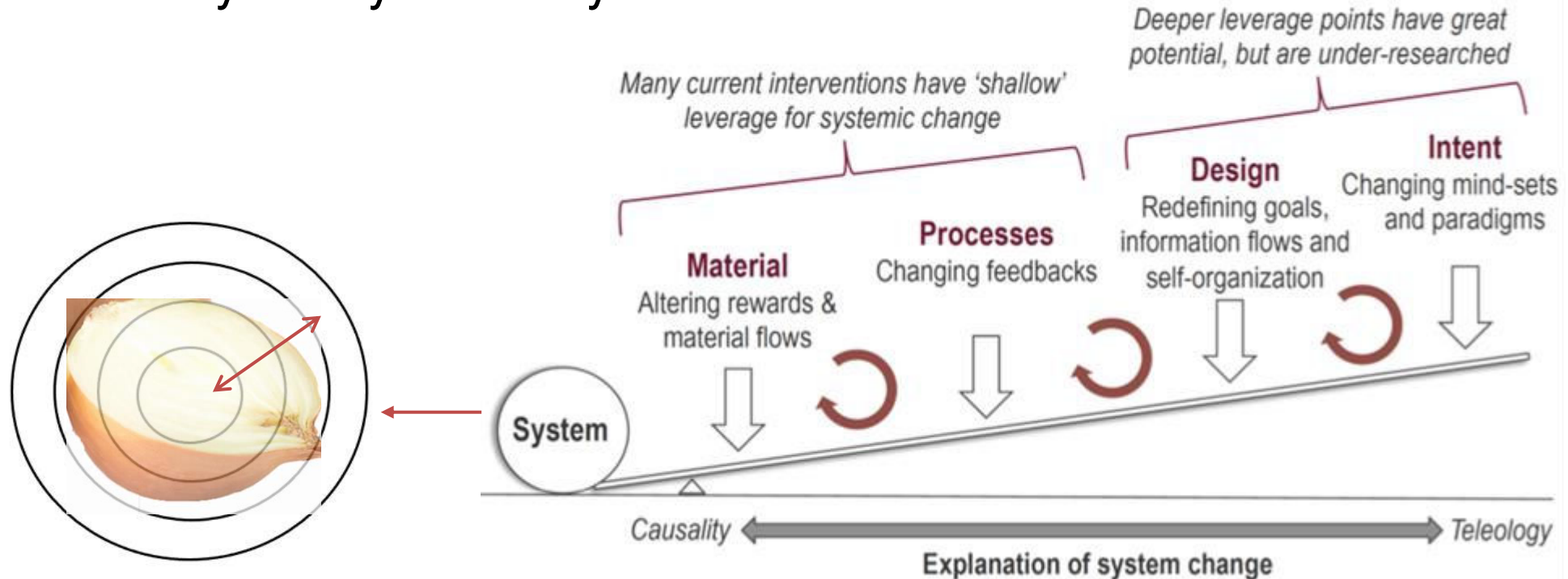
# Conceptual approach: navigating systems



e.g. Davelaar, 2021; Leventon, 2021

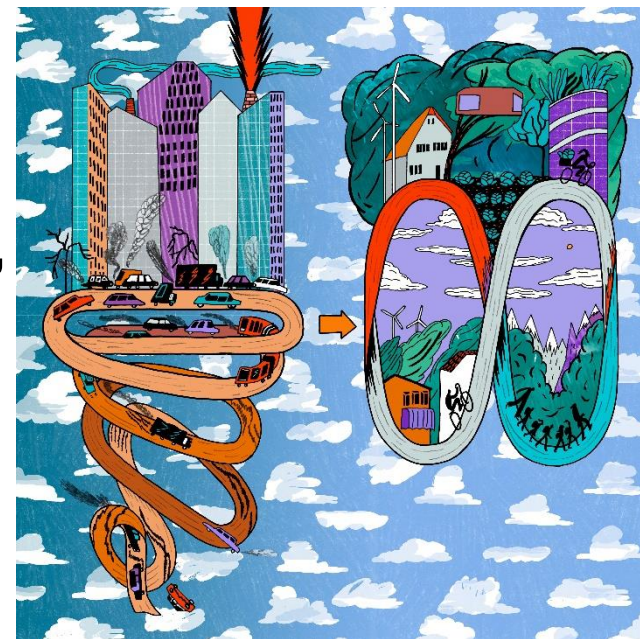
# Conceptual approach: impact of interventions

- how different interventions might move beyond systems layers



# Application: Working with cases in PLANET4B

- **Which properties, in which system,** does the intervention target?
- **What change** is created over time and space, or indirectly?
- **What other interventions** are needed (in connected systems) to create transformation?





Activity	Outputs	Outcomes
<b>WS1 – systems mapping</b>	A systems map showing interactions and layers	Understanding system of focus Understanding connected system layers
<b>WS2 – Identifying leverage points</b>	LP diagram for chosen system and intervention	Identifying system properties targeted by chosen intervention
<b>WS3 – Monitoring and indicators</b>	List of indicators and how they can be monitored	Tracking what change is created by chosen interventions
<b>WS4 – Barriers and opportunities for broader impact</b>	Systems map showing enablers and disablers of change	Identifying what other changes are needed, in what systems, to create transformative change.

---

# Thank you!

Julia Leventon, [Simon Vano](#), Blanka Louckova,

Patricia Ofori-Amanfo

[leventon.j@czechglobe.cz](mailto:leventon.j@czechglobe.cz)

[vano.s@czechglobe.cz](mailto:vano.s@czechglobe.cz)